

Your Council Tax



Press Esc to exit full screen

The 2024/25 budget sees an increase in overall spending of over £47m, with more than £160m being invested in capital projects across Nottinghamshire.

Good, sound financial decisions, and the hard work we've undertaken with partners and communities in recent years, puts us in a better position than most councils to balance our budgets and transition our services to something more sustainable going forward.

Pressures on local government services, in particular, the cost of delivering care services has been well documented, but we're proud that this council will continue to invest in key, core services to build resilience and independence, leading to better outcomes for everyone.

We're focussed on protecting the early help and prevention services that support the most vulnerable individuals and communities across the county.

We're investing in our children's future, with £48m to ensure that there are sufficient school places and a further £22m invested to support the provision of new school places for children with special educational needs and disabilities.

Over the next few years, £142m will be invested in highways including road repairs, road safety, and improvements to bus services.

This is a budget that invests, builds community resilience, sustainable services and looks at economic growth and regeneration for future generations. It helps to make Nottinghamshire a place that people are proud to call home.

Due to the rise in the national minimum wage, social care staff costs have increased by **£5m**

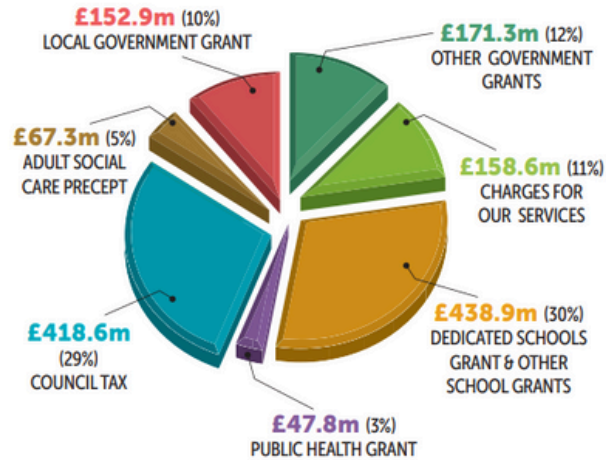
Costs for educational health care plan assessments (EHCPs) **£61m**

Children in care: fostering agency costs **£17.4m**

The cost of providing local public services in 2024

2.8% INCREASE IN COUNCIL TAX
 +
2% ADULT SOCIAL CARE PRECEPT
 =
£1.13 WEEKLY INCREASE FOR MOST COUNTY HOUSEHOLDS
 →
£28m EXTRA MONEY TO SUPPORT LOCAL PUBLIC SERVICES

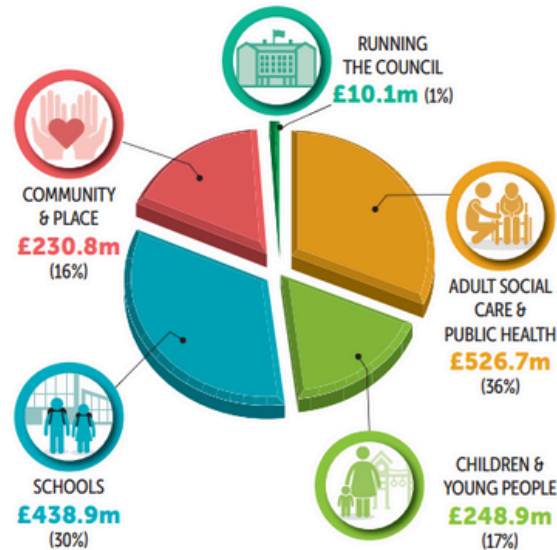
Where the Council's budget comes from



YOUR COUNCIL TAX PAYMENT 2024/25	
Band A	£1,028.44
Band B	£1,199.85
Band C	£1,371.25
Band D	£1,542.66
Band E	£1,885.47
Band F	£2,228.29
Band G	£2,571.10
Band H	£3,085.32

The actual amount you pay will depend on your individual circumstances (whether you receive single person discount, student or disability exemptions etc) and additional amounts for your District Council, Fire and Police.

How the Council's budget is spent



In addition to the increase in Council Tax, the County Council has also approved an additional Government precept solely for adult social care of 2%. The impact of this is:

ADULT SOCIAL CARE PRECEPT	
Band A	£176.28
Band B	£205.66
Band C	£235.04
Band D	£264.42
Band E	£323.18
Band F	£381.94
Band G	£440.70
Band H	£528.84