

Our Outcomes-based Strategy for

# Children and Young People with Special Educational Needs and Disabilities (SEND) in Nottinghamshire 2024-2027



# Foreword from the chair of the Nottinghamshire Pioneers Youth Forum

As chair of the Pioneers forum for young people with disabilities, it's a pleasure to contribute to this foreword.

Having lived experience of my own disability and as a Nottinghamshire resident and a young person I believe that it is key that children, young people, and families are offered help and support for as long as it's needed and that signposting to adult services begins early.

I am pleased to see that this document reflects that support and offers the opportunity for the voice of children young people and families to be heard and shape services and that those views determine the performance indicators in this strategy. I recognise that to improve and grow it's necessary that the people who are most impacted are recognised and listened to.

## Thank you

Will Hickman

*Chair of the Nottinghamshire Pioneers Youth Forum*

I need to be listened to and heard.



I need to be the healthiest I can be.



I need to be safe and feel safe.



I need to be accepted and valued by people I trust.



I need to be prepared for my future.



I need to enjoy life and have fun.



# Welcome to our outcomes-based strategy for 2024 to 2027

We are privileged to oversee local services working to support and meet the needs of children and young people and their families. Moving forwards from our Joint local area SEND inspection outcome in January 2023, the Nottinghamshire SEND local area recognises that for children and young people to achieve their potential, all services need to work together, with parents, carers, children and young people, to shape and deliver the right health, care and education support, in the right place, at the right time and to enable young people to transition into adulthood and independence, when able to do so.

The Nottinghamshire local area SEND Partnership brings together the organisations from across education, health, care, and the voluntary sector, which provide services to meet the needs of children and young people with SEND in Nottinghamshire. Our local area partnership involves two large organisations, Nottinghamshire County Council and Nottingham and Nottinghamshire Integrated Care Board (ICB).

The SEND Strategy will be supported by an annual delivery plan. The Nottinghamshire SEND Partnership Assurance and Improvement Group (PAIG) will provide the oversight and governance for the Strategy and the associated delivery plan.

We are committed to working with all our partners; those across education settings (including alternative provision), health and social care, voluntary sector, and our local employers; to improve outcomes and lived experiences for our children and young people, with SEND (0–25-year-olds).

We would like to offer thanks to all those who have co-produced the strategy and engaged in supporting children and young people with SEND and their families in Nottinghamshire. We remain committed to continuing to strengthen relationships with our partners and many agencies to ensure positive experiences for our children and young people living and growing up in Nottinghamshire.



**Adrian Smith**  
Chief Executive of  
Nottinghamshire County Council



**Amanda Sullivan**  
Chief Executive of Nottingham  
& Nottinghamshire Integrated  
Care Board

# Foreword from Cllr Sam Smith

I am pleased to introduce you to the new Nottinghamshire SEND Strategy which sets out our vision and outcomes for children and young people with SEND living in Nottinghamshire. I want to see the best possible outcomes for all children and young people in Nottinghamshire and the County Council, as part of the SEND local area partnership, is committed to working together to improve the lived experiences of children and young people with SEND and their families.

In Nottinghamshire, our local partnership is supported by a highly motivated and hard working workforce and highly engaged stakeholders working together to make continued improvements and support children, young people and families. This Strategy clearly sets out our collective ambition for the future so that our children and young people receive the right support, in the right place and the right time

## Councillor Smith

*Nottinghamshire County Council's Cabinet Member for Education and SEND.*

I need to be listened to and heard.



I need to be the healthiest I can be.



I need to be safe and feel safe.



I need to be accepted and valued by people I trust.



I need to be prepared for my future.



I need to enjoy life and have fun.





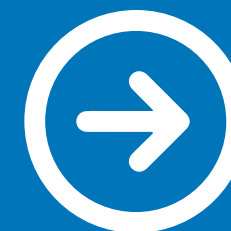
# Contents

Foreword from the chair of the Pioneers young people’s forum	1
Welcome to Nottinghamshire’s Special Educational Needs and Disabilities (SEND) Strategy for 2024-2027	2
Foreword from Cllr Sam Smith	3
Introduction	5
Our vision for children and young people with SEND in Nottinghamshire	5
Our outcomes for children and young people with SEND in Nottinghamshire	6
Our commitment as a local area partnership	7
How we commit to working together	8
How we commit to working with children and young people and their families	9
How have we engaged with the local area partnership to develop our SEND strategy?	10
Our strategic outcomes framework for Nottinghamshire	11
I need to be listened to and heard	12
I need to be the healthiest I can be	13
I need to be safe and feel safe	14
I need to be accepted and valued by people I trust	15
I need to be prepared for my future	16
I need to enjoy life and have fun	18
The local area profile	19
Leadership and governance of our Nottinghamshire SEND system	24



# Introduction

The Nottinghamshire local area SEND partnership is committed to the vision and outcomes set out within this strategy. Our strategy has been developed with stakeholders including parents, carers and children and young people with SEND. Engagement activities have included a survey, seven engagement events open to all partners and feedback from groups of children and young people attending various education settings in Nottinghamshire. The vision and the actions in this strategy are led by the six co-produced outcomes that we want for all children and young people with SEND in Nottinghamshire. These are outcomes that we want for all children and young people, while recognising children and young people with SEND often need additional help and support to achieve these outcomes.



## Our vision for children and young people with SEND in Nottinghamshire

‘Our vision is to champion and improve the experiences and outcomes for children and young people with Special Educational Needs and Disabilities (SEND), and to ensure that they are listened to and heard; they are the healthiest they can be, are safe and feel safe, accepted and valued, able to enjoy, have fun, and prepared for their futures. ’

**SEND  
partnership**

Right support, right place,  
right time

# Our outcomes for children and young people with SEND in Nottinghamshire



I need to be listened to and heard



I need to be the healthiest I can be



I need to be safe and feel safe



I need to be accepted and valued by people I trust



I need to be prepared for my future



I need to enjoy life and have fun



# Our commitment as a local area partnership

## How we commit to working together

Partners in Nottinghamshire will work together with openness, honesty and transparency, holding each other to account to deliver on the improvements required. To enhance the lived experiences for children and young people with SEND and their families. The local area partnership will do this by ensuring that all parts of our education, health and care systems are working together achieve these outcomes for our children and young people with SEND.



Partners are committed to the following principles for how we will work together in Nottinghamshire:

- SEND being everyone's responsibility.
- Children, young person, and the family at the heart of the SEND system.
- What we do needs to make sense to all stakeholders.
- We need to be able to respond to new and emerging issues.
- We need to measure and monitor the delivery of key priorities.
- We need a governance structure with clear routes for monitoring, challenge, and assurance.
- We must work collaboratively as a partnership across the local area.
- We need strong communications across the partnership with all stakeholders.
- We will focus on the impact on children and young people with SEND and their families, their lived experiences.

I need to be listened to and heard.



I need to be the healthiest I can be.



I need to be safe and feel safe.



I need to be accepted and valued by people I trust.



I need to be prepared for my future.



I need to enjoy life and have fun.





# How we commit to working with children and young people, and their families



To deliver improvements in Nottinghamshire effectively, we recognise that the local area partnership must:

- Listen and learn,
- Build/re-build trust and relationships,
- Ensure feedback influences and informs our improvement activity,
- Enable as many people as possible to understand, and contribute to, our improvement journey,
- Work with children, young people and families to evidence progress and impact,
- Respect and recognise the range of different experiences felt by children, young people, and families.

# How have we engaged with the local area partnership to develop our SEND strategy?

The Department for Education funded Research and Improvement for SEND Excellence (RISE) partnership supported the Local Area Partnership to develop the outcomes for this strategy. RISE initially supported three workshops with SEND leaders across Nottinghamshire including parents and carers in Autumn 2023. An underpinning aspect of this work was a wide-reaching series of engagement activities. This included:

- The SEND outcomes survey that was shared through a range of networks in December 2023
- A series of five in person SEND strategy engagement events as well as two online events with adults in Spring 2024
- A series of engagement activities with young people including a survey questionnaire and in-person visits to schools in Spring 2024.

The SEND outcomes survey received 557 responses with 85% of respondents agreeing to the outcomes. 77% of responses were from parents and carers, 16% from multi-agency professionals and 5% from children and young people. Responses were also spread evenly across the seven Nottinghamshire districts.

Close to 300 people from across the local area partnership attended the SEND strategy engagement events. This included more than 100 school leaders, approximately 75 health colleagues and over 60 parents and carers, and staff from county council services, including children's social care. During the events, attendees discussed and agreed the final wording of the outcomes in this strategy, which was then signed off by the Nottinghamshire SEND Partnership Assurance Improvement Group (PAIG) in March 2024.



I need to be listened to and heard.



I need to be the healthiest I can be.



I need to be safe and feel safe.



I need to be accepted and valued by people I trust.



I need to be prepared for my future.



I need to enjoy life and have fun.





As part of the **SEND outcomes survey**, 99 young people with SEND responded to the specific question ‘Can you please tell us the outcome you would like for your life?’ The key responses are shared in the diagram opposite and formulate the co-produced and final outcomes.

In addition, the Nottinghamshire SEND Co-production Officer visited six education settings and spoke to over 60 children and young people with SEND to gather their views in person, using a range of accessible communication strategies. The young people’s feedback is reflected throughout this strategy, with some example quotes shared.

- I need to be listened to and heard. 
- I need to be the healthiest I can be. 
- I need to be safe and feel safe. 
- I need to be accepted and valued by people I trust. 
- I need to be prepared for my future. 
- I need to enjoy life and have fun. 

# Our strategic outcomes framework for Nottinghamshire

The local area's expectation is for our six outcomes to be embedded across all parts of the local SEND system. Each individual child or young person will have a plan to support them in achieving the best possible outcomes. Organisations supporting them will have a strategic plan on how they will enable the outcomes for all children and young people with SEND. The framework presented below illustrates how the local area partnership will deliver and measure the impact of these outcomes for all children and young people with SEND at a strategic level. The SEND Strategy will have a detailed annual delivery plan which will outline how the local area partnership will deliver the required improvements.





## I need to be listened to and heard

### What do children and young people tell us?

*"I don't get chance to be listened to, they don't take it on board."*

*"Children have good ideas and they want adults to listen."*

### What do families tell us?

*"Communication is the most important thing and something that is the main issue."*

### Key actions for the local area

- Our local SEND system will communicate clearly and respectfully with parents and carers about how to access advice and support for their children.
- Nottinghamshire Parent Carer Forum will be included in the local area SEND governance structures e.g. PAIG.
- Pioneers Youth Forum will represent the views of children and young people with SEND in local area SEND governance structures e.g. PAIG.
- All partnership organisations will ensure that children and young people with SEND, and their parents and carers are actively involved in service design and evaluation.

### How will the local area measure progress?

Children and young people and their parents/carers report higher confidence in the ability of local SEND systems to listen to and respond to their views.

- Case studies of children and young people with SEND and their families describe improvements in accessing health services.
- More children and young people have confidence and report that they get the right help, at the right time and it makes a difference.
- More parents and carers report their views are considered when deciding if an assessment will take place.
- More families report good or better communications during the writing of the EHC Plan.
- More families say they and their children / young person's views are reflected in the final EHC Plan.
- More families tell us that their EHC Plan annual review process is valuable and on time.
- More young people with SEND report that they have been supported to think about and prepare for their future.





## I need to be the healthiest I can be

### What do children and young people tell us?

*"I make sure to go out sometimes to keep healthy."*

*"We want, more playground equipment."*

### What do families tell us?

*"Effective assessment support to understand child's needs for both their capability and capacity."*

*"Once seen at hospital, consultants work well with my child."*

### Key actions for the local area

- Reduce waiting times for specialist health therapy assessments e.g. speech language communication needs, neurodevelopment pathways and mental health.
- Improve transitions for young people with SEND moving into adult specialist services e.g. health and social care.
- Improve our joint commissioning arrangements to ensure that we better meet the specific needs of our children and young people with SEND in Nottinghamshire.
- Leadership of the local area partnership will develop and use a shared data set to inform decision-making. This will be enabled by new data sharing and processing arrangements within the local area partnership.

### How will the local area measure progress?

Children and young people with SEND, and their parents and carers agree that the right health services exist to meet their needs and they do not have to wait too long to access them.

- Less children and young people aged 0 to 25 are on the dynamic support register.
- More children and young people aged 14-25 on the Learning Disability register have had an annual health check.
- Less children and young people waiting longer than 18 weeks for an assessment for the health services they need.
- Personal health budgets are more accessible to children and young people and their families.
- More families say that their children and young people get the right help and support from healthcare services.



## I need to be safe and feel safe

### What do children and young people tell us?

*"I want to feel safe in the community."*

*"I would like a safe place to process my feelings/a situation and calm down."*

*"I want to feel safe in the community."*

### What do families tell us?

*"School has been very supportive."*

*I want them to be ... "Building independence skills and confidence."*

### Key actions for the local area

- More children and young people with SEND attend education settings regularly.
- More children and young people report that they feel safe in school and their community.

### How will the local area measure progress?

SEND system partners report that more individual children and young people accessing their services feel safe.

- Higher attendance for children and young people with SEND in all Nottinghamshire education settings.
- Children and young people with an education, health and care plan (EHCP) naming specialist placement, wait less time for a placement to be identified.
- Less children and young people with SEND on part-time tables in education settings.
- Less children and young people with SEND receiving a suspension or permanent exclusion from an education setting.
- Children and young people with SEND, who are open to children's social care or the youth justice team have the right support in place at the right time.
- More parents and carers who agree that their continuing care package meets the needs of their child or young person.
- More families who report that the healthcare professionals who care for their children and young people have the relevant skills and expertise to meet their needs.
- More families report that they get the right help and support from social care services including early help.



## I need to be accepted and valued by people I trust

### What do children and young people tell us?

*"I can trust my teachers and Mum."*

*"It's so good to say, this is me."*

*"For my whole life, I've been masking."*

### What do families tell us?

*"It's nice to speak to other parents as we share ideas."*

*"Awareness being raised across the school with other teachers and pupils alike."*

### Key actions for the local area

- More of our workforce across the local area SEND partnership are knowledgeable, confident and have the right skills to understand and meet the needs of children and young people with SEND.
- All local area partner organisations across education, health and social care will make reasonable adjustments to include children and young people with SEND and their families.
- The local area partnership to facilitate district level discussion about inclusion for children and young people with SEND in education settings in Nottinghamshire.

### How will the local area measure progress?

Children and young people report that they have more positive relationships in their lives.

- More children and young people with SEND who report that there is someone at their education setting they can go to if they feel worried.
- More children and young people with SEND who report that they have a friend/friends or trusted person who they can talk to.
- More parents /carers who state that they know who to contact to get the support they need for their child.
- We will have a new local area SEND workforce competence training framework and more staff will access it.
- The local area partnership to facilitate district level discussion about inclusion for children and young people with SEND in education settings in Nottinghamshire.

## I need to be prepared for my future



### What do children and young people tell us?

*"I would like workplace visits."*

*"I get stressed out if I don't get answers. I need a plan and access to information."*

*"When you have a question they help you."*

### What do families tell us?

*"More support with transition to work and adulthood."*

*"Her curriculum at school has a lot of focus on life skills and preparing for adulthood."*

*"This is one of the best provision my son attends, they care deeply for him."*

### Key actions for the local area

- Children and young people with SEN Support report positive experiences of the support they receive in their education settings.
- Children and young people receive high quality education, health and care plans (EHCPs) on time.
- Children and young people receive their EHCP annual review on time including any amendments.
- Children and young people are prepared to live digitally enabled lives, including the use of Technology Enabled Care.

## Continued

### How will the local area measure progress?

Young People feel well supported for their transition into adulthood.

- More 2-year development health checks are completed with age expectations in communication being achieved.
- More children reach early years foundation stage attainment (Reaching a 'Good Level of Development').
- More 11-year-old pupils with SEN Support or EHCP achieving expected standard in KS2 attainment.
- More 16-year-olds with SEN achieve average progress 8 score.
- More children and young people accessing their full-time educational entitlement in education settings, including alternative provision.
- More EHCPs capture the voice of children and young people including their aspirations and outcomes.
- More young people aged 16 to 18 move into positive outcomes, including supported internships.
- More families with a transition plan for their child feel supported, understanding what will happen when and who will help.
- More children and young peoples with SEND report that they can safely and confidently access public transport.
- More parents and carers can access clear information and advice to help them to support their children and young people to make decisions about their future.
- More parents and carers report that their child or young person gets the right help and support for their education and / or training.
- More parent and carers express their satisfaction with the Alternative Provision for their children.





## I need to enjoy life and have fun.



### What do children and young people tell us?

*“School is fun, I see my friends.”*

*“Support for children who are less able to join in regular activities, especially during school holiday times.”*

### What do families tell us?

*“It would be helpful to know what help is available.”*

*“To have opportunities to go to places which are accessible to all.”*

*“More SEND activities for pre school and young children.”*

### Key actions for the local area

- Improved information available about activities in the community.
- Increase opportunities to meet the interests of children and young people with SEND.
- Improve the accessibility to local activities for children and young people with SEND.

### How will the local area measure progress?

- Children and young people experience improved access to a good range of local activities in their community.
- More opportunities provided through community short breaks.
- More children and young people with SEND who are involved in a club, group, or hobby in school or the community.
- More families report that their children and young people get the right help and support to join clubs, activities, to go on holiday or to make friends.

# The local area profile

Additional information about the Nottinghamshire local area profile can be found in the Nottinghamshire Joint Strategic Needs Assessment section on Special Educational Needs and Disability completed in March 2023.

## How many children and young people attending Nottinghamshire schools who have SEND?

	2015/16	2016/17	2017/18	2018/19	2019/20	2020/21	2021/22	2022/23
<b>Total Number of Pupils</b>	<b>119,192</b>	<b>120,724</b>	<b>121,939</b>	<b>123,524</b>	<b>124,712</b>	<b>125,650</b>	<b>127,788</b>	<b>129,244</b>
No. pupils with an EHC Plan	1,573	1,591	1,669	1,792	1,911	2,130	2,225	2,565
% pupils with an EHC Plan	1.3%	1.3%	1.4%	1.5%	1.5%	1.7%	1.7%	2.0%
No. pupils with SEN Support	9,114	9,182	9,895	11,460	11,895	12,028	12,638	13,273
% pupils with SEN Support	7.6%	7.6%	8.1%	9.3%	9.5%	9.6%	9.9%	10.3%

Source: *Special Educational Needs in England*  
<https://explore-education-statistics.service.gov.uk/find-statistics/special-educational-needs-in-england>

Source Table: *sen\_phase\_type\_*



## How many children and young people attending Nottinghamshire schools who have SEND?

Primary need	Children & young people with an EHCP				Children and young people with SEN Support			
	2019/20	2020/21	2021/22	2022/23	2019/20	2020/21	2021/22	2022/23
Autistic Spectrum Disorder	707	829	927	1,104	1,749	1,779	1,904	2,142
Hearing Impairment	16	19	20	16	177	182	187	205
Moderate Learning Difficulty	138	108	118	112	2,484	2,447	2,317	2,121
Multi- Sensory Impairment	3	9	11	11	38	37	31	35
Other Difficulty/Disability	65	68	49	38	709	572	500	428
Physical Disability	99	78	84	114	461	468	480	480
Profound & Multiple Learning Difficulty	93	107	102	100	26	22	17	17
SEN support but no specialist assessment of type of need					345	369	371	380
Severe Learning Difficulty	200	236	228	224	82	68	70	60
Social, Emotional and Mental Health	190	232	225	295	2,418	2,468	2,738	3,132
Specific Learning Difficulty	56	72	78	93	1,273	1,428	1,621	1,668
Speech, Language and Communications needs	133	144	118	159	1,831	1,886	2,096	2,259
Visual Impairment	17	14	17	14	134	124	134	165
<b>Total</b>	<b>1,717</b>	<b>1,916</b>	<b>2,018</b>	<b>2,316</b>	<b>11,727</b>	<b>11,850</b>	<b>12,466</b>	<b>13,092</b>

I need to be listened to and heard.



I need to be the healthiest I can be.



I need to be safe and feel safe.



I need to be accepted and valued by people I trust.



I need to be prepared for my future.



I need to enjoy life and have fun.



## What educational provision is available in Nottinghamshire?

- **881 Early years providers**
- **284 Mainstream primary schools**
- **45 Mainstream secondary schools**
- **6 Enhanced provision units within mainstream schools**
- **11 Special schools (2 new schools agreed)**
- **11 Independent special schools**
- **97 Approved alternative provisions**
- **5 Alternative provision free schools**
- **2 Mainstream further education colleges**
- **2 Universities**
- **1 Special further education college**

## What health care provision is available in Nottinghamshire?

- Primary care services that provide the first point of contact for healthcare services.
  - 131 General practitioner practices
  - 116 Dentists
  - 210 Pharmacists
  - 114 Opticians
- Secondary care services, usually care provided in a hospital or in a clinic.
  - 3 Acute Hospital NHS Trusts
  - 1 Community Hospital NHS Trust.
  - Continuing healthcare
    - o Wheelchair services
    - o Personal health budgets
  - Key working service (delivered by Nottinghamshire County Council)

I need to be listened to and heard.



I need to be the healthiest I can be.



I need to be safe and feel safe.



I need to be accepted and valued by people I trust.



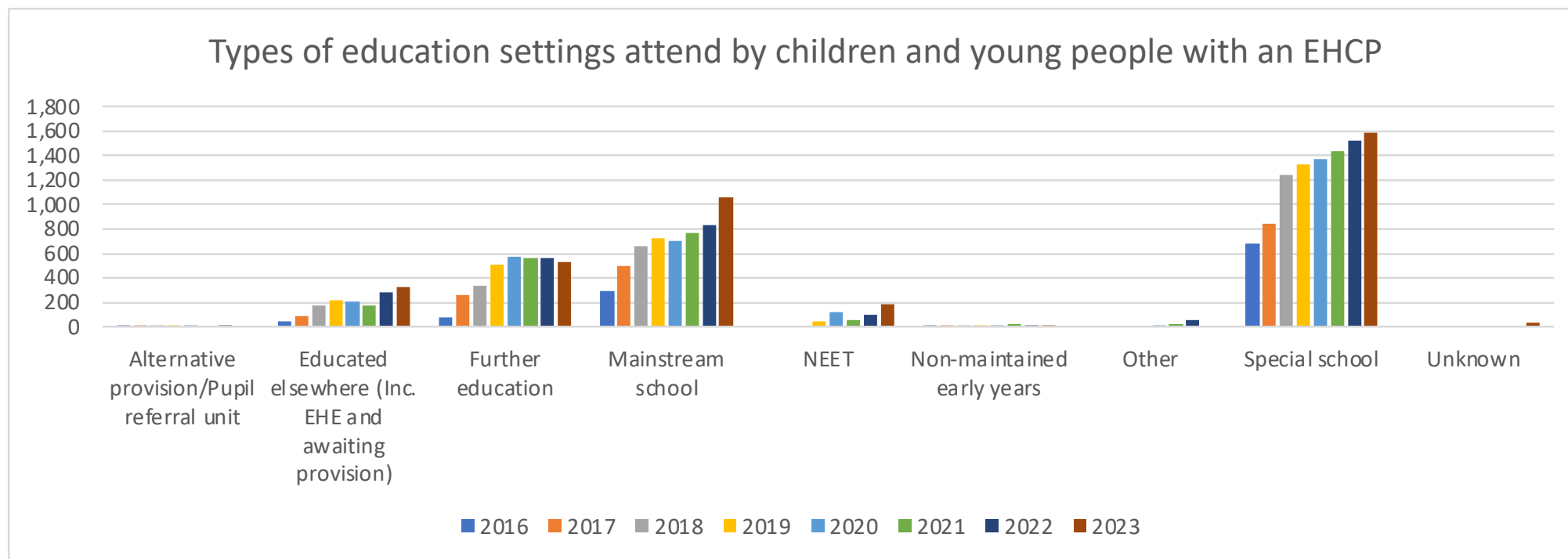
I need to be prepared for my future.



I need to enjoy life and have fun.



## What types of educational provision do our children and young people with an EHCP attend?



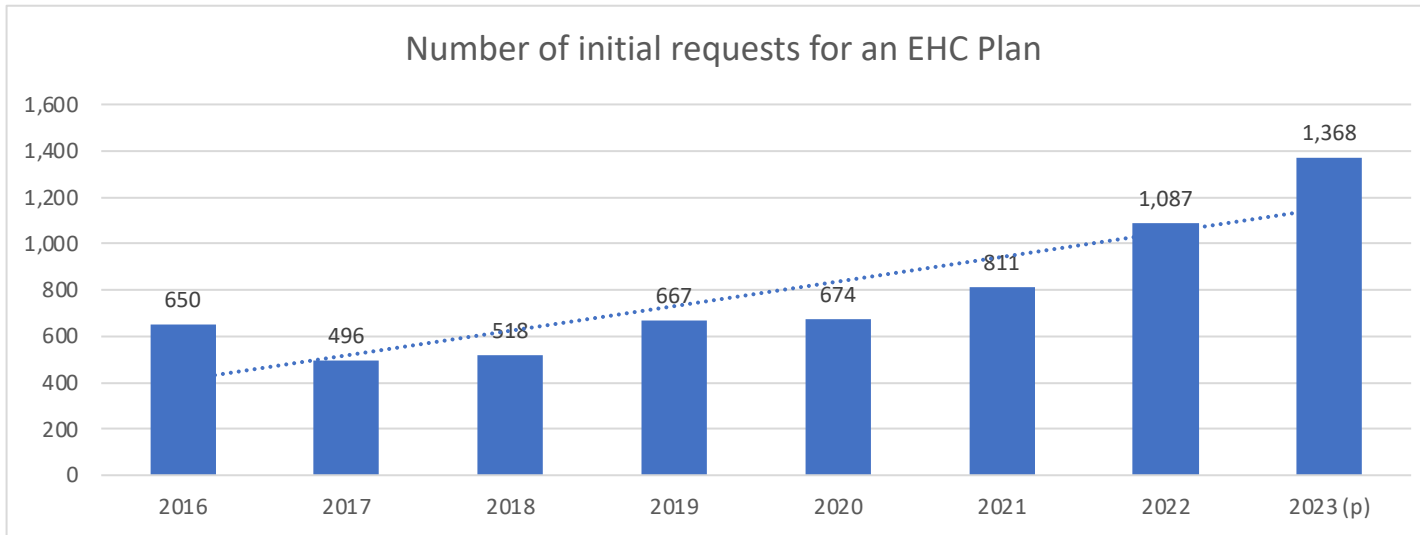
Alternative Provision outside of that provided by mainstream educational establishments is included under Educated Elsewhere as per the guidance issued by the Department for Education.

## How well do we assess and identify our children with the most complex SEND?

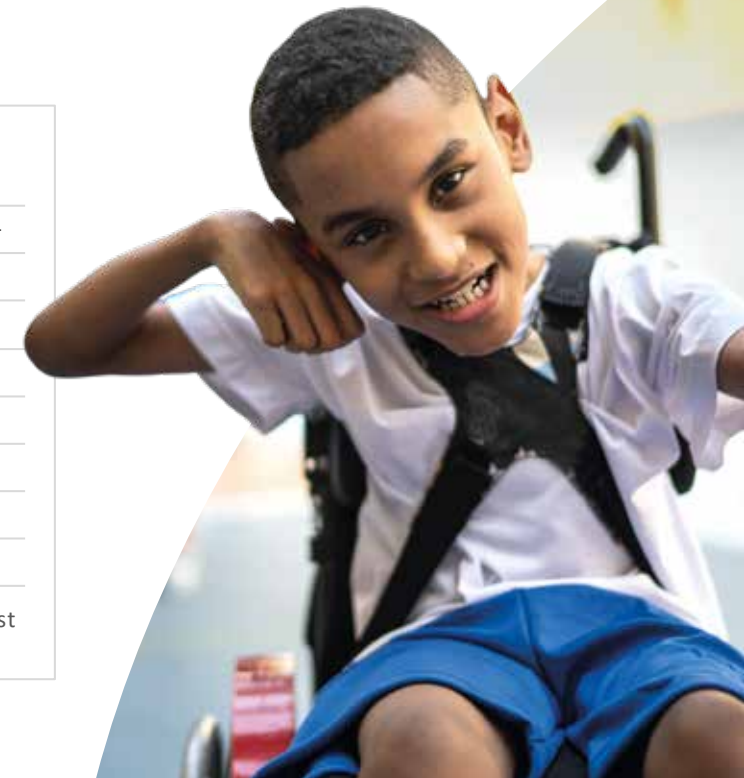
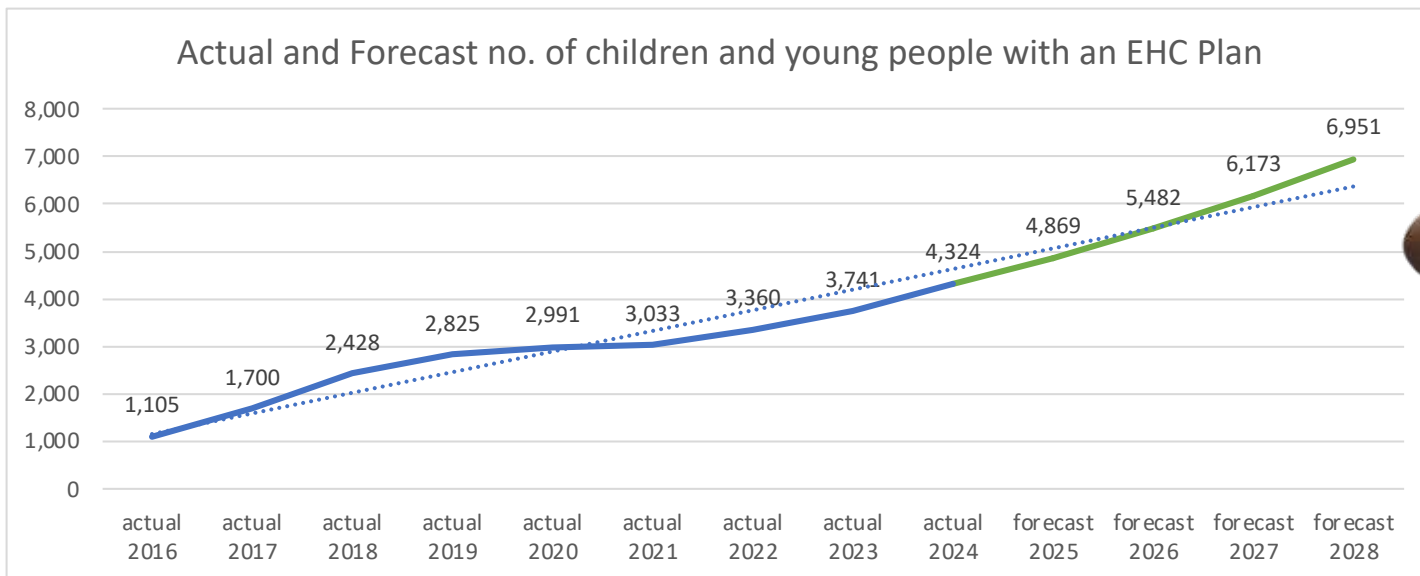
The percentage of new EHCPs (without exceptions) issued within the statutory 20-week timescale.	2016	2017	2018	2019	2020	2021	2022	2023 (p)
% EHC Plans (excluding exceptions) issued within 20 weeks	90.6%	43.1%	93.3%	85.2%	98.0%	43.7%	4.5%	28.0%



## How is our SEND system changing? The number of initial requests for an EHC plan



## Predicted growth in the number of children and young people with EHCPs



# Leadership and governance of our Nottinghamshire SEND system

The following legal frameworks guide the delivery of services and provision for children with SEND in England.

- [The Equality Act 2010](#) says that children with SEND should have fair treatment in all areas of life and for all who are working to provide services to children and young people with SEND do so by promoting inclusion and removing barrier to learning and accessing education.
- The [Children and Families Act 2014](#) wanted local areas to improve the way support is offered to children and young people with SEND and their families, instructing support services to focus on what is important to children with SEND and their families.
- [The Care Act 2014](#). Sets out the local authorities' responsibilities to support adults who may need it. It also helps local area partners to prepare young people and their families for growing up and accessing adult services.
- [The Special Educational Needs and Disability Regulations 2014 and the SEND Code of Practice \(0-25\)](#) inform services who work with children with SEND and their families what they need to do.
- The [NHS Long Term Plan](#) (2019) places commitment and action upon local health commissioners and services to make sure that the whole NHS has an awareness of the needs of people with a learning disability (LD) and people with autism. It says these services should work together to improve the way it cares, supports, listens to, works with people with learning disabilities and autism and have provided a detailed implementation plan to improve access to mental health services.
- [SEND and Alternative Provision Improvement Plan March 2023](#) details the plans required to improve support and services for children and young people with special educational needs and disabilities and those attending alternative educational provision.
- [Health and Care Act 2022](#) aims to make it easier for health and care organisations to deliver joined-up care for people who rely on multiple different services.

I need to be listened to and heard.



I need to be the healthiest I can be.



I need to be safe and feel safe.



I need to be accepted and valued by people I trust.



I need to be prepared for my future.



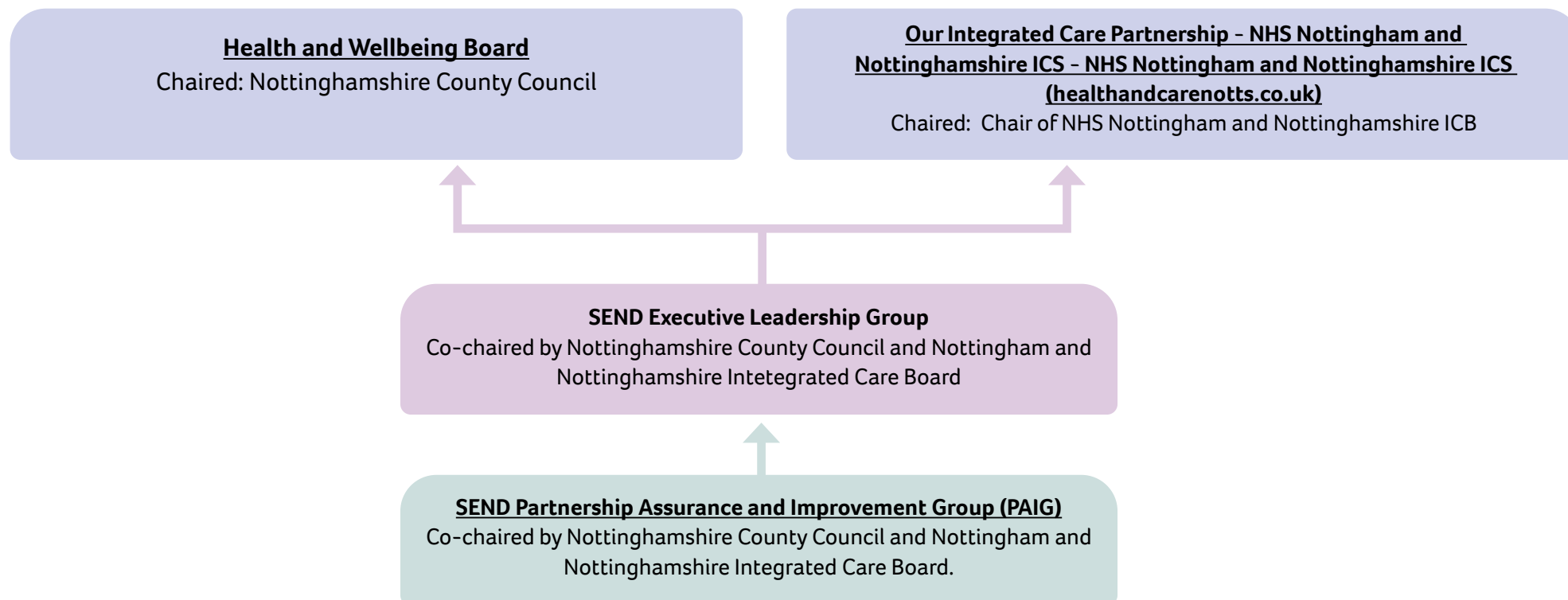
I need to enjoy life and have fun.



These national frameworks hold our local SEND system to account. Our government has tasked Ofsted and the Care Quality Commission (CQC) to work together to inspect local areas across England, to see how well the local area partnership work together to improve the experiences and outcomes of children and young people with SEND (0–25-year-olds). In 2023, a new [SEND inspection framework](#) was developed to support this assessment. Nottinghamshire’s local area SEND inspection took place in January 2023 and the report outcome is detailed [here](#). Our Priority Action Plan for SEND Improvement is detailed [here](#).

As part of our SEND improvement plan, we have implemented a new structure of multi-agency boards and meetings where partners from education, health and care can come together with parents and carers to oversee our local SEND arrangements and monitor our progress towards our overall vision and outcomes.

## Nottinghamshire SEND governance structure



**The Nottinghamshire SEND Partnership Assurance and Improvement Group (PAIG) will have direct oversight of this local area SEND Strategy and the annual delivery plan.**

## Statutory measures for services

There are several statutory measures which are required to be reported on by the Department for Education and NHS England about SEND.

Table 1 below provides a summary of these measures:

<b>Table 1 – Summary of statutory measures</b>
<b>Percentage and number of education, health, and care plans (EHCPs) issued within 20 weeks (excluding exceptions)</b>
<b>Percentage of EHCP annual reviews completed within the 12-month time scale</b>
<b>Percentage of EHCP annual review amendments completed within 12 weeks</b>
<b>0-19 healthy child programme development reviews</b>
<b>Mental health statutory requirements</b>
<b>LedeR review compliance</b>
<b>Compliance for digital FLAG for reasonable adjustments.</b>



# Some useful links

- [Nottinghamshire SEND Local Offer](#)
- [Young People's Zone](#)
- [SEND Glossary](#)

I need to be listened to and heard.



I need to be the healthiest I can be



I need to be safe and feel safe



I need to be accepted and valued by people I trust



I need to be prepared for my future



I need to enjoy life and have fun







*“School has been very supportive”*



**SEND**  
**partnership**  
Right support, right place,  
right time