



Nottinghamshire
County Council

Spring 2025

CountyLife

Investing in the heart
of communities



INSIDE:

Your services - key
facts and figures
PAGE 3

Getting things
done near you
PAGES 4-9

How your Council
Tax is spent
PAGES 10-11

Dates for
your diary
PAGE 12

Council Leader Sam Smith meets families enjoying the enhanced children's space in the upgraded Stapleford Library and Learning Centre. The £741,000 improvements, via the Stapleford Towns Fund, included new learning facilities and exhibition space. We continue to invest in other libraries around the county, read more on page 8.



Welcome

Nottinghamshire County Council Leader,
Councillor Sam Smith

When I was elected leader of Nottinghamshire County Council in December, I said I would be focused on delivery, delivery, delivery. Four months on, and I am more determined than ever to ensure we deliver more improvements.

My colleagues and I are working tirelessly to deliver for you and bang the drum for Nottinghamshire at every opportunity as part of our ongoing drive to make it a better place to live, work and visit.

Without doubt, one of our top priorities is repairing and maintaining the county's roads. There have been more than 100 resurfacing schemes including the A616 Great North Road, the A609 Nottingham Road, Trowell, the A612 Lowdham Road, a Mansfield section of the A38 King's Mill Road and the A617 Rainworth Bypass. In the past 12 months we have invested an additional **£66m** to improve our highways – which I know is important to you.

I can't deny that we, like all local authorities, are facing challenging times and one of my first priorities has been to balance our budget.

However, we have an excellent record in delivering well-run, efficient services while keeping Council Tax low.

We have invested more than **£100m** in our capital programme, on our commitment to build new primary schools and improve the standards of education.

Millions of pounds are being invested to expand our secondary schools, improve buildings, and meet a target of creating up to 500 additional places for children with special educational needs and disabilities (SEND) by 2026 to address the growing

demand for more specialist places – which includes building a new **£30m**, 160-place SEND school in Mansfield.

As I have said before, we are one of only a few local authorities that have not closed a single library, maintained a thriving youth service, and expanded rural bus services with our Nottsbus On Demand service.

I am working for Nottinghamshire to get more transport, infrastructure, skills and investment funding and I look forward to working closer with the Mayor in these key areas.

There are projects like STEP Fusion in Bassetlaw, which will provide thousands of highly skilled jobs for Nottinghamshire residents, including hundreds of apprenticeships for young people.

In 2025, we will also continue with our commitment to financially support community groups and charities via our successful Local Communities Fund.

It goes without saying that it is going to be another busy year, but we will be working as hard as ever to maintain our proud record and build on the successes we've achieved so far.

I hope you enjoy reading this year's County Life, highlighting how we are using your money to deliver key services, create opportunities, and support you.

We provide hundreds of services for our residents, here are some highlights from over the last year...

£11.2m worth of support for **34,000** households most in need

Majority of pupils offered a place in their families' first choice school

More than **95%** for primary schools | Over **91%** for secondary schools

More than **2.4m** people visited Nottinghamshire's libraries

More than **1.2m** items of e-resources borrowed

Prototype fusion energy powerplant to be built near Retford by 2040

6,500 new jobs (once in operation)

More than a **£295m** annual boost to the economy (on average)

£770,000 investment to support hundreds of community groups

Read more on page 9

Trading Standards officers seized almost **£130,000** worth of illegal cigarettes, hand rolling tobacco and vapes

The team also prosecuted **rogue traders** for fraudulent trading offences. This resulted in prison sentences totalling more than **15 years**

Our highways between March and December 2024

50,454 pothole repairs

32,635m² of pothole patch repairs

77,311 drainage gullies cleaned

84,755 highways inspections carried out

6,421 street lights repaired and **735** columns replaced



Access many of the most popular council services whilst on the move with our MyNotts app.



Delivering for Notts



Investing in our future generations

Our commitment to investing in new schools and making sure Nottinghamshire's young people have the right learning environment to thrive and succeed will continue this year. This includes:

- ✓ Thorseby Vale Primary School in Edwinstowe, which is due to open in autumn 2025, will serve a new housing development on the outskirts of the village. The new academy will be run by Diverse Academies and will house 210 pupils aged 5 to 11.
- ✓ Investing millions of pounds to expand Nottinghamshire's secondary schools, improve school buildings and meet a target of creating up to **500 additional SEND places** by 2026 to address the growing demand for more specialist school places across the county.
- ✓ A new **£30m**, 160-place school for children with special educational needs and disabilities (SEND) in Mansfield is under construction (pictured). The school, which is being built on the former Ravensdale School site, will be run by Diverse Academies and will be known as Horizons Academy. It is due to welcome students aged 7 to 19 by spring term 2026.
- ✓ Providing more support for small and rural schools through the launch of a five-year small school sustainability strategy.



Celebrating the start of work at the new Thorseby Vale Primary School, Edwinstowe



Travelling by bus is better than ever

Bus travel in Nottinghamshire is hitting new highs! With an 11 per cent increase in passenger numbers in the first half of 2024, our efforts to enhance local bus services are paying off.



This positive trend is thanks to initiatives like **ticket discount schemes, expanding on-demand bus zones** (South Newark and Central Rushcliffe) and installing over **270 new real-time bus displays**.

We've invested an additional **£3.8m** in the local bus network, providing better connections, more frequent trips and new services. Residents now enjoy improved hourly connections to Newark Northgate Station, more early morning and evening journeys between Bingham and Nottingham city centre, additional evening journeys on the Stagecoach-run Pronto service between

Mansfield and Nottingham, a better evening service between Calverton and Nottingham and more frequent and reliable services to Keyworth.

A whopping 90 per cent of passengers are loving the changes we've made, giving our local bus services a big thumbs up.

And with even more improvements on the horizon, **scan to find out more about our Nottsbus On Demand service.**



Seeing the sights in Notts by bus! The Sherwood Forest visitor centre is a highlight of Stagecoach's Sherwood Arrow route



Getting things done

near you



Prioritising our highways

We've invested **£66.5m** into our highways service during 2024/25, with this year's capital maintenance programme being the most ambitious in many years.

All of our planned **103 road resurfacing schemes** have been completed, prioritising repairs along the busiest roads used by residents. This includes the eastbound carriageway of the A617 Rainworth Bypass which is used by 20,000 vehicles each day. (Pictured top right)

You may have seen more safety repairs take place on our roads over winter, but we will return to make a permanent repair wherever possible by either fixing individual potholes or as part of a mechanised patching or resurfacing scheme.

Please report potholes through our website or the MyNOTTS app.



Recent weather events have been so severe that alongside road improvements, we also prioritised getting even more drainage work done.

We increased our budget by **£467,000** to more than **£4m**

Four additional teams now deliver extra routine and reactive drain cleansing, targeting sites which have been particularly affected by flooding

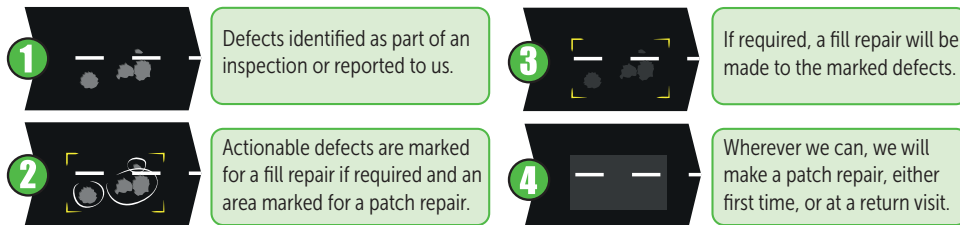


A fleet of seven tankers are working days, nights and weekends

Extensive culvert improvement schemes taking place across the county

We prioritise drains which require more extensive 'dig outs' and minor repairs

The 4 stages of our pothole repairs



To view all our latest repairs, including large scale patch repairs, visit nottshighways.co.uk

NOTTS HIGHWAYS
IMPROVING YOUR ROADS

Tackling flood risk

This year we've secured **over £120m** in external funding for flood alleviation schemes across Nottinghamshire. Working with partners such as the Environment Agency, we continue to use innovative approaches like natural flood management measures and sustainable drainage solutions alongside engineered schemes to tackle flood risks holistically.

These projects not only help with flood risks but also boost biodiversity and water quality through habitat restoration and green infrastructure. Examples include Woodborough, Costock, Burton Joyce, Southwell and Lowdham.

We're also empowering communities through our award-winning Community Flood Signage Scheme, enabling residents to take action and close roads during flood events. More than 550 wardens have been trained across 40 communities, with even more schemes in development. We thank them for their service and dedication.

Together, we're building a more resilient and prepared Nottinghamshire.



Our dedicated highways drain cleansing crew at work

Support to make homes more energy efficient

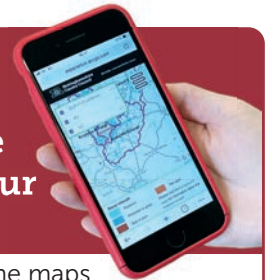
Eligible households can access grants to make their homes more energy efficient, to stay warm and save money on bills. Residents most in need could be entitled to free solar panels, improvements to heating systems, and loft, cavity and solid wall insulation.

Find out if you are eligible for these grants:

nottinghamshire.gov.uk/homeenergysupport



Who offers the strongest mobile phone signals for your street?



Our interactive, online maps can help you find which of the UK's main providers offer the strongest mobile phone signals near you.

Having strong mobile signals can be essential for everyone, especially those who need to access online health care services, use smart meters or charge an electric vehicle.

We want our county to be even better connected and these maps will help identify where improvements are needed, especially in rural areas.

Check your area's signal strength: nottinghamshire.gov.uk/mobilemaps

Improving our communities



Investing in community groups

Discover the hidden gems in your local library

Our libraries are bustling, vibrant community hubs brimming with excitement for all ages. Over **£30m** has been invested in modernising the library buildings and digital infrastructure, making them tech-savvy paradises with free Wi-Fi, computer access and an extensive collection of books, audiobooks, e-books, and digital magazines. Thanks to our new library management system, joining and borrowing has never been easier.



Sewing courses are one of the many adult learning opportunities on offer at our libraries

Over the last three years, libraries in Bircotes, Bilsthorpe, Blidworth, Burton Joyce, Ollerton, Woodthorpe, Hucknall and Newark have all been refurbished. This investment is a testament to our unwavering commitment to enhance community spaces across Nottinghamshire and ensure libraries remain welcoming spaces in the heart of the community. The Towns Fund has also helped transform our libraries in Kirkby-in-Ashfield and Stapleford. From toddler story times and regular groups to adult learning courses and cultural experiences, there's always something happening at your local library.

Supporting families and young people

Our Youth Service is providing young people with safe spaces, engaging activities, and trusted support from skilled youth workers. We remain committed to investing in opportunities that empower young people and support them to reach their full potential.

We continue to roll out Family Hubs, offering support to families who have children and young people up to the age of 19. From April, families will be able to walk in, call or contact the service online

to get the information, support and guidance they may need at a time they need it.



Councillor Tracey Taylor meeting a young family at the Bingham Family Hub

Our **£770,000** Local Communities Fund continues to support the incredible work of hundreds of voluntary groups and organisations, including help towards their essential running costs.

We are investing in projects which are at the heart of communities such as vital upgrades to local facilities, community centres and grassroots sport clubs.

We also help fund projects which give residents better access to affordable and healthy food.

This helps make Nottinghamshire a healthier, happier place to live as well as encouraging more community resilience.

Could you make a difference?

Interested in helping make a real difference to the lives of others?

There are two ways you can make an impact. We're looking for:

Foster carers for local children



Fosterforeastmidlands.org.uk

Carers to support those who have been discharged from hospital to live more independent lives.



Reablement.Recruitment@nottsc.org.uk



£2,010

towards essential running costs for Cotgrave Community Garden



£5,000

received by Friends of Gedling Country Park, towards enhancing the park via a pair of new memorial benches as a tribute to the late Queen



£20,000

awarded to Blyth Cricket Club to help with essential upgrades to facilities

Your Council Tax



The 2025/26 budget sees an increase in overall spending of more than £64m, with £144m also being invested in capital projects across Nottinghamshire.

We are in a better position than most councils to balance our books and this is due in no small part to good, sound financial decisions in recent years.

Efficiencies within services and smarter working with partners and communities means that we can continue to invest in the services that matter most to residents.

Against a backdrop of increasing financial pressures in local government, we're focused on protecting frontline services and committed to supporting the most vulnerable children and adults in our county.

Next year will see more than £55m ploughed into vital projects, such as repairing the county's roads and maintaining an effective bus service, especially for rural areas.

Investing in our children's future remains a key priority, so the next 12 months will see £67m invested in education and special educational needs and disabilities (SEND), making sure that every child has access to a school place.

The financial situation is challenging with rising inflation, increased National Insurance and National Living Wage costs, but we continue to invest where the need is greatest and strengthen core services.

Did you know?

In 2024/5 The Council Tax increase in Nottinghamshire was below the national average when compared with other county authority rises

Rising inflation means our costs have gone up by **£35.9m**

This includes an increase of **£14.3m** due to a rise in National Insurance

Due to the rise in the National Living Wage, social care staff costs have increased by more than **£18m**

Children in care: fostering costs **£9.5m**

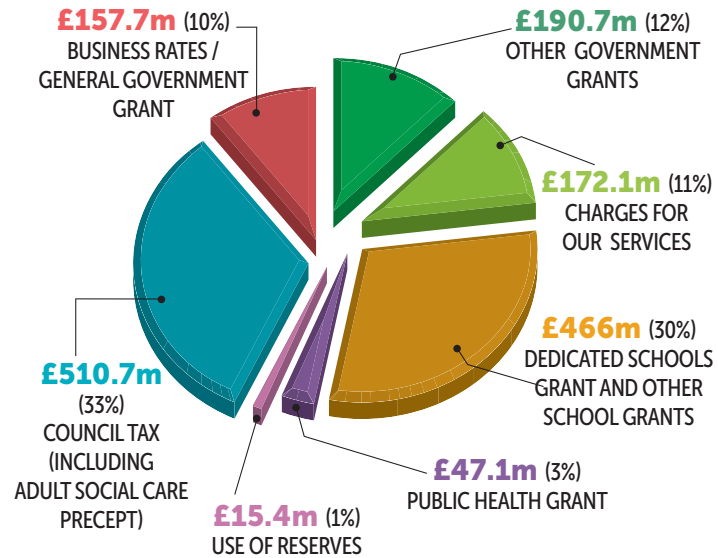
Did you know?

By not increasing Council Tax by the maximum, Nottinghamshire taxpayers have saved more than **£20m over the last 4 years**

The cost of providing local public services in 2025



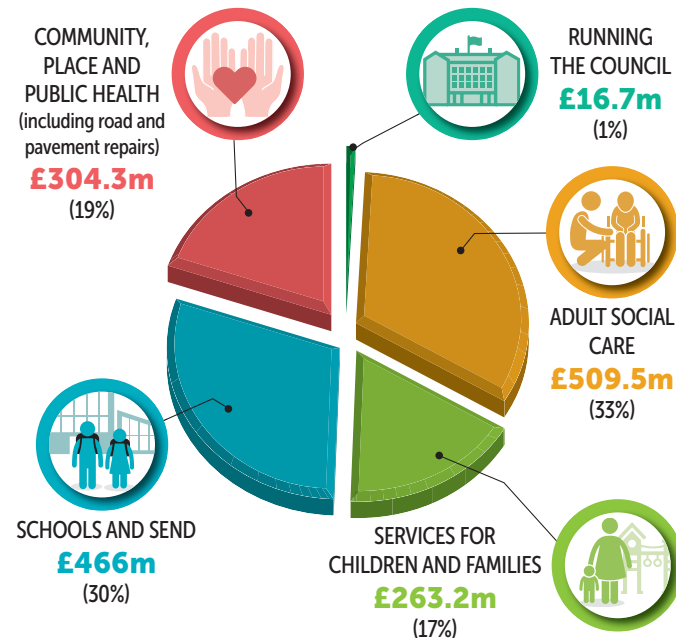
Where the Council's budget comes from



YOUR COUNCIL TAX PAYMENT 2025/26	
Band A	£1,062.66
Band B	£1,239.76
Band C	£1,416.88
Band D	£1,593.98
Band E	£1,948.20
Band F	£2,302.42
Band G	£2,656.64
Band H	£3,187.96

The actual amount you pay will depend on your individual circumstances (whether you receive single person discount, student or disability exemptions etc) and additional amounts for your district council, Fire and Police.

How the Council's budget is spent



In addition to the increase in Council Tax, the county council has also approved an additional Government precept solely for adult social care of 2%. The impact of this is:

ADULT SOCIAL CARE PRECEPT	
Band A	£200.37
Band B	£233.77
Band C	£267.16
Band D	£300.56
Band E	£367.35
Band F	£434.14
Band G	£500.93
Band H	£601.12

At the time of going to print, these figures are accurate.

Dates for your diary

Here are a few of our event highlights for 2025

MAY

First anniversary of high ropes attraction **Adventures** opening its doors

at Mill Waters Parks and Reservoir, Sutton in Ashfield



adventures.nottinghamshire.gov.uk

MAY

8



Nottinghamshire to commemorate the **80th anniversary of VE Day** (Victory in Europe) which marked the end of World War Two in Europe.

MAY

10 Nottinghamshire County Show at Newark Showground



nottinghamshirecountyshow.com

AUG

The annual **Robin Hood Festival** at Sherwood Forest will be held throughout August



visitsherwood.co.uk

AUG

15 Nottinghamshire **80** VE & VJ Day 2025



Nottinghamshire to also commemorate the **80th anniversary of VJ Day** (Victory over Japan).

This is the day which in effect brought World War Two to an end.

AUG

25 Nottinghamshire Day
Time to celebrate all things Notts!
Follow **#NottsDay**



Look out for more details at nottinghamshire.gov.uk



[facebook.com/nottinghamshire](https://www.facebook.com/nottinghamshire)



[@nottscountycouncil](https://www.instagram.com/@nottscountycouncil)



[@NottsCC](https://www.twitter.com/@NottsCC)