



**Nottinghamshire
County Council**

Infrastructure Funding Statement

2023-2024

December 2024

CONTENTS

1. Introduction.....	1
Policy Background.....	1
County Council Context.....	1
2. Section 106 Report.....	3
Contributions summary for 2023/24.....	3
Contributions agreed during 2023/24.....	3
Contributions received during 2023/24.....	4
Contributions spent during 2023/24.....	4
Contributions allocated during 2023/24.....	7
3. Appendices.....	9
List of contributions agreed during 2023/24.....	9
List of contributions received during 2023/24.....	11

1 Introduction

Policy Background

- 1.1 Government legislation in relation to developer contributions requires any local authority that receives a financial contribution from a developer to publish an annual Infrastructure Funding Statement (IFS) outlining income and expenditure during each financial year, from the year 2019/20 onwards¹. The information within the statement is required to cover contributions secured through both Section 106 Agreements and the Community Infrastructure Levy.
- 1.2 Developer contributions secured under Section 106 Agreements (commonly referred to as planning obligations) are intended to provide infrastructure to mitigate the impact of a specific development, to make it acceptable in planning terms, where a proposal would otherwise not be acceptable. Section 106 of the Town and Country Planning Act 1990 enables local authorities to enter into a negotiated agreement to secure monetary and non-monetary (direct provision) contributions.
- 1.3 The Community Infrastructure Levy (CIL) is a non-mandatory funding mechanism intended to help fund major infrastructure to support the development of a wider area, rather than to make individual planning applications acceptable in planning terms. There are currently four District/Borough Councils within Nottinghamshire that have adopted CIL charging schedules. As the County Council is not a CIL charging authority, this document will report solely on planning obligations secured through Section 106 Agreements.

County Council Context

- 1.4 Nottinghamshire County Council is responsible for the delivery of a range of services to meet the needs of its residents including those moving into new housing, and therefore seeks to secure planning obligations towards provision of new infrastructure where necessary. Details of the Council's approach to securing planning obligations is available in its [Developer Contributions Strategy](#).
- 1.5 Where a proposed development triggers a County Council infrastructure requirement, the Council will request that it is a signatory to the Section 106 Agreement, which will enable contributions to be provided by the developer directly to the County Council. In some cases, it will receive contributions passed over from the District/Borough Council which may collect contributions from developers on the County Council's behalf (usually where the County Council is *not* a signatory to the agreement).
- 1.6 The Infrastructure Funding Statement will not report on contributions that have been collected or are held by the District / Borough Councils (this will be in their own report). However, where contributions have been transferred to the County Council, this will be included in the reported expenditure.
- 1.7 For the purpose of reporting developer contributions, the National Planning Policy Guidance defines infrastructure within a set of categories. The infrastructure categories which are relevant to the County Council's responsibilities, and which are referred to throughout this document, include:
 - Education
 - Transport and Travel
 - Highways
 - Community Facilities (Libraries)
- 1.8 Contributions towards other infrastructure types, such as open space and leisure, affordable housing and health are sought and managed by the local planning authorities as part of their service responsibilities and are not included in this document.
- 1.9 Improvements to highways infrastructure may also be secured through Section 278 Agreements. These are legally binding agreements between the County Council as Local Highway Authority and

¹ Community Infrastructure Levy (Amendment) (England) (No. 2) Regulations 2019

housing developers, which enable the developer to carry out works to the highway. However, highway works are beyond the scope of this document, which reports solely on S106 planning obligations.

- 1.10 Occasionally, the County Council will receive non-financial contributions through Section 106 Agreements, such as land to accommodate new schools / school expansions or direct provision of infrastructure onsite, such as schools constructed by the developer. Where they are relevant to the reported year, details of non-financial contributions will be included within the IFS.

2 Section 106 Report

Summary

- 2.1 This report sets out the County Council's income and expenditure relating to developer contributions secured through Section 106 Agreements (commonly referred to as planning obligations) during the 2023-24 financial year (i.e., from 1st April 2023 through to 31st March 2024).
- 2.2 This document will report on obligations that have been entered into and collected by Nottinghamshire County Council, usually where the County Council is a signatory to the Section 106 Agreement. This document will also report on contributions that have been committed to, or spent on, county council services, including where these were collected by the District / Borough Council on behalf of NCC.
- 2.3 A summary of the key information is outlined in Table 1.

Table 1: Headline figures from the reported year

Description	Amount
Total money to be provided through planning obligations agreed during 2023/24	£15,734,475
Total money received through planning obligations paid during 2023/24	£ 7,931,465
Total money received through planning obligations that was spent during 2023/24	£ 6,585,690*
Total money received through planning obligations retained at the end of 2023/24	£34,804,743

*Includes monies transferred to the County Council by the District / Borough Councils

Contributions Agreed

- 2.4 During the financial year 2023/24, Nottinghamshire County Council entered into 16 Section 106 Agreements, comprising a total of £15,734,474.74 in contributions to be provided to the Council for its services. Table 2 summarises how these obligations are dispersed geographically and across service areas. Further details regarding the associated developments are available in Appendix 1.

	Ashfield	Bassetlaw	Broxtowe	Gedling	Mansfield	Newark	Rushcliffe
Agreements 16	0	1	5	1	5	2	2
Education £11,603,470.16	£0.00	£0.00	£1,339,204	£121,255	£2,356,833	£7,491,738.66	£294,439.50
Transport £1,610,703.61	£0.00	£35,507.61	£206,075	£12,050	£674,400	£537,700	£144,971
Highways £2,420,239.27	£0.00	£0.00	£0.00	£0.00	£2,347,181	£0.00	£73,058.27
Community £36,871.50	£0.00	£0.00	£8,457	£0.00	£28,414.50	£0.00	£0.00
Other £63,190.20	£0.00	£0.00	£0.00	£0.00	£57,058.50	£0.00	£6,131.70
Total £15,734,474.74	£0.00	£35,507.61	£1,553,736	£133,305	£5,463,887	£8,029,438.66	£518,600.47

Table 2: Planning obligations entered into during the reported year

- 2.5 The County Council was not a signatory to every Section 106 Agreement that included contributions relating to County Council delivered services during this financial year, with some contributions having been secured by Ashfield and Bassetlaw District Councils on behalf of the County Council. These contributions are reported in the relevant District Council's Infrastructure Funding Statements.
- 2.6 In addition to the financial contributions that were agreed, the S106 Agreement associated with Land at Fernwood South (ref. 16/00506/OUTM) included the provision of education land (2.2 hectares) for the provision of a new two form entry primary school with nursery within the development site.

Contributions Received

- 2.7 The total sum of contributions received by Nottinghamshire County Council directly from housing developers during the financial year 2023/24 was £7,931,465. Table 3 summarises how these obligations are dispersed geographically and across service areas. Further information regarding the associated developments is available in Appendix 2.

	Ashfield	Bassetlaw	Broxtowe	Gedling	Mansfield	Newark	Rushcliffe
Education £7,059,633	£0.00	£1,409,919	£95,448	£3,720,048	£1,120,386	£0.00	£713,832
Transport £564,548	£25,000	£141,558	£24,175	£110,403	£93,418	£24,495	£145,499
Highways £280,899	£0.00	£173,578	£5,874	£0.00	£30,761	£6,037	£64,649
Community £16,536	£0.00	£16,536	£0.00	£0.00	£0.00	£0.00	£0.00
Other £9,849	£0.00	£2,982	£0.00	£0.00	£6,867	£0.00	£0.00
Total £7,931,465	£25,000	£1,744,573	£125,497	£3,830,451	£1,251,432	£30,532	£923,980

Table 3: Planning obligation payments received during the reported year

- 2.8 Further contributions may have been received by the District / Borough Councils on behalf of the County Council. Any funding relating to County Council infrastructure will be transferred once a suitable project has been identified. Further information on the planning obligation payments received by the District / Borough Councils is available in their own Infrastructure Funding Statements.
- 2.9 In addition to the financial contributions that were received, the County Council acquired 1.5 hectares of land during the reporting year under the S106 Agreement associated with Land at Gateford Park Ashes, Park Avenue, Worksop (ref. 14/00431/OUT) for the provision of a new primary school.

Contributions Spent

- 2.10 The total amount of contributions that were spent by Nottinghamshire County Council on infrastructure projects during the financial year 2023/24 was £6,585,690.29, as set out below. Table 4 relates to funding which has been collected by the County Council and Table 5 relates to funding which has been collected by the District / Borough Councils and transferred to the County Council for expending.

District	Application	Amount	Infrastructure Item
EDUCATION			
Bassetlaw	16/00968/OUT	£171,146.23	Expansion of St Luke's CofE Primary School
Bassetlaw	19/01642/FUL	£8,080.86	
Broxtowe	11/00758/OUT	£497,763.76	Reconfiguration and hall extension to Albany Infant School
Gedling	2014/0169	£34,365.00	Single classroom extension to Carlton Central Junior School
Gedling	2015/0424	£52,027.00	Expansion of Carlton le Willows Academy
Gedling	2019/1186	£254,472.50	
Gedling	2020/0238	£26,903.00	
Gedling	2018/0577	£30,382.46	
Mansfield	12/0433/NT	£227,411.50	Replacement of mobile classrooms Leas Park Junior School
Newark	18/00509/FULM	£160,370.00	Expansion and reconfiguration of Samuel Barlow Academy
HIGHWAYS & TRANSPORT			
Bassetlaw	15/00971/OUT	£2,460.00	Bus stop improvements on Blyth Road and Bawtry Road
Bassetlaw	19/01642/FUL	£1,054.00	Bus stop improvements on Coach Road
Bassetlaw	14/00503/OUT	£1,194.00	Bus stop improvements on Matilda Drive
Gedling	2005/0925	£16,000.00	Bus stop improvements within the vicinity of the site
Gedling	2013/1406	£4,047.00	Bus stop improvements on Papplewick Lane

Gedling	2014/0740	£400.00	Bus stop improvements within the vicinity of the site
Mansfield	2014/0302	£14,502.22	Bus stop improvements on Birch Street and Laurel Avenue
Mansfield	17/0738/FUL	£893.00	Bus stop improvements on Woodhouse Road
Rushcliffe	19/02330/FUL	£11,245.85	Bus stop improvements on Wilford Lane

Table 4: Contributions spent during the reported year (where they were paid to the County Council)

District	Application	Amount	Infrastructure Item
EDUCATION			
Bassetlaw	16/10/00047	£131,170.53	Expansion of East Markham School
Bassetlaw	14/00431/OUT	£1,760,093.75	New Primary School at Gateford Park (Whipman Woods)
Broxtowe	16/00382/ROC	£19,565.31	Internal remodelling at Awsworth Primary School
Broxtowe	16/00382/ROC	£6,125.09	Extension to Horsendale Primary School
Newark	08/01905/OUTM	£299,311.30	Expansion and reconfiguration of Samuel Barlow Academy
Newark	13/00458/OUTM	£135,649.53	
Newark	14/01308/FULM	£117,880.95	
Newark	16/00139/RMAM	£69,145.26	
Newark	17/00582/FULM	£252,010.00	
Newark	19/00585/FULM	£225,632.93	
Rushcliffe	13/01263/FUL	£159,474.54	
Rushcliffe	13/02228/OUT	£407,071.73	
Rushcliffe	14/01927/VAR	£747,567.61	
Rushcliffe	17/00673/FUL	£487,445.32	New performing arts block for West Bridgford School
HIGHWAYS & TRANSPORT			
Ashfield	V/2013/0656	£7,700.00	Travel Plan Monitoring on Larwood Park
Bassetlaw	02/11/00040	£23,311.65	Upgrades to two bus stops: BA0003 & BA0655
Mansfield	15/0380/ST	£6,292.47	Improvements to bus stop MA0323 Oakleaf Close
Newark	14/00669/FULM	£14,156.25	Improvements to the bus stops denoted NS0617, NS0625, NS0530, NS0318, NS0335 in Ollerton
Rushcliffe	06/01226/OUT	£191,406.72	Extension to the existing shared use footway/cycleway from A6097 Bridgford Street to junction with Main Street, Newton
COMMUNITY			
Newark	14/01576/FULM	£2,541.17	New adult and children's books at Farnsfield Library
Newark	14/01596/OUTM	£3,061.47	New adult and children's books at Edwinstowe Library
Rushcliffe	12/01199/FUL	£4,358.33	Replenishing stock at Ruddington Library

Table 5: Contributions spent during the reported year (where they were transferred from the District)

2.11 Whilst the funding outlined in Tables 4 & 5 was spent during the reported year, it is not necessarily the case that the associated infrastructure was delivered during that same year. The amount of contributions spent relates to the year in which the funding has been transferred to meet the costs of infrastructure projects which, in some cases, will have been delivered prior to the reported period.

Case Study 1: Samuel Barlow Primary Academy



The Council has invested approximately £1.3m associated with the various phases of the housing development off Cavendish Way, Clipstone, towards the expansion of Samuel Barlow Academy. The project included the purchase of the old schoolhouse, relocation of the early years facility and the improvement of teaching and resource areas, as well as the construction of a new multipurpose hall, modern kitchen and an updated main entrance. The total cost was £3m and has enabled the school to increase its capacity to meet the growth in local pupil population.

Source: <https://www.samuelbarlowprimary-ac.org.uk/samuel-barlow-primary-academy-officially-launches-new-building-extension-2/>

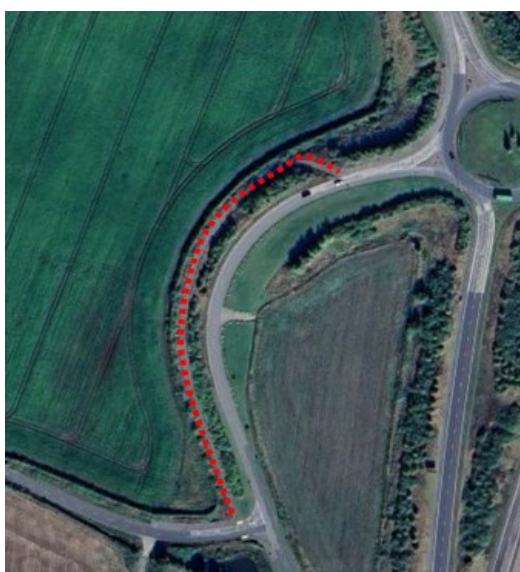
Case Study 2: Whipman Woods Flying High Academy



The Council is investing over £3m, including £1.760m spent during this financial year, from the development at Gateford Park, Worksop, towards the provision of a new primary school within the development site. The school opened in September 2024 and will provide the learning facilities and associated playing areas for up to 210 primary and 26 nursery pupils. The school has also been designed to allow for future expansion, taking the total number of primary pupils up to 315 if required, using expansion land.

Source: <https://www.morgansindallconstruction.com/news/new-school-in-gateford-on-track-for-timely-handover/>

Case Study 3: Newton Lane Cycleway



The County Council has invested developer contributions collected by Rushcliffe Borough Council from the original phase of development at Former Royal Air Force Newton towards the delivery of a segregated cycleway along Newton Lane. The route provides an extension to the existing shared use footway and cycleway on Bridgford Street to the junction with Main Street, thereby supporting connectivity from the development at RAF Newton to the wider cycling network.

Source: [Google Maps](#)

Contributions Allocated

- 2.12 The total amount of funding that was committed to an infrastructure project during the financial year (but not spent) by the County Council was £1,569,108.52 (details of the relevant items are included at Table 6). At the end of the financial year, the total contributions that had been collected by the County Council (during any year) but that had not been committed to a project was £27,985,927.92.

District	Application	Amount	Infrastructure Item
EDUCATION			
Rushcliffe	21/03223/FUL	£225,799.78	Construction of Millside Spencer Academy East Leake
Rushcliffe	18/02806/OUT	£739,746.00	Retrospectively fund expansion of Radcliffe Junior School
HIGHWAYS & TRANSPORT			
Bassetlaw	14/00503/OUT	£25,000.00	Local bus service provision to serve the site
Bassetlaw	16/00015/FUL	£230,127.00	Signals upgrades to A638 Arlington Way, Retford
Gedling	2019/0213	£30,988.79	Installation of bus stops to include footways and shelter
Mansfield	13/0593/NT	£39,653.11	Traffic Calming on Felton Avenue Mansfield Woodhouse
Mansfield	14/0302/NT	£2,221.43	Installation of real time information at bus stop MA0371
Mansfield	12/0540/NT	£4,400.00	Travel Plan Monitoring
Rushcliffe	18/02700/OUT	£54,347.70	Local bus service provision to serve the site
Rushcliffe	21/02283/FUL	£39,435.00	Towards vehicle replacement for the local community transport scheme operated by the Soar Valley Bus
Rushcliffe	17/02292/OUT	£100,000.00	Demand Responsive Transport to replace Service 863
Rushcliffe	21/03104/FUL	£55,000.00	Upgrades to the NET crossing & junction on Wilford Lane
Rushcliffe	19/02330/FUL	£22,389.71	Installation of on-crossing detection and optimisation of junction at Wilford Lane/Compton Acres and works to link Wilford Lane/Compton Acres at the tram crossing

Table 6: Contributions committed by county council services during the reported year

- 2.13 In addition, the County Council has requested to withdraw the following contributions from the District / Borough Councils in order to meet the costs of infrastructure projects as listed in Table 7. The total amount of funding requested by the County Council was £3,796,023.46. In some cases, a further approval may be required from the District / Borough Councils before the funding can be released.

District	Application	Amount	Infrastructure Item
EDUCATION			
Ashfield	V/2018/0285	£25,545.13	Additional teaching spaces, toilet facilities and ancillary space at Edgewood Primary School
Rushcliffe	12/01199/FUL	£267,412.09	Expansion of the school capacity at Rosecliffe Spencer Academy from 315 places to 420 places (Phase 2) Construction of Millside Spencer Academy 315 places plus a 26-place nursery on Rempstone Road, East Leake
Rushcliffe	19/02068/FUL	£370,656.00	
Rushcliffe	14/01927/VAR	£331,815.39	
Rushcliffe	16/01881/OUT	£556,726.94	
Rushcliffe	19/00323/OUT	£179,410.00	
Rushcliffe	19/00678/OUT	£225,441.65	
HIGHWAYS & TRANSPORT			
Ashfield	V/2013/0409	£120,000.00	Puffin Crossing on Watnall Road, NE of Chatsworth Drive
Ashfield	V/2013/0409	£31,902.00	Bus stop upgrades on Nottingham Road
Bassetlaw	02/11/00040	£5,995.00	Surface improvements to Worksop Footpath 84 and 32
Broxtowe	14/00749/FUL	£7,100.00	Improvements to bus stop denoted BR0065 Nine Corners
Broxtowe	11/00758/OUT	£81,557.23	Local bus service provision to serve the site
Newark	14/00161/FULM	£6,000.00	Introduction of double yellow lines around two junctions off Hemplands Lane in Sutton-on-Trent
Rushcliffe	10/02105/OUT	£102,322.48	Installation of traffic calming features in Newton including a series of plateaux, cushions and gateway features to form a system of traffic calming measures
Rushcliffe	13/02329/OUT	£28,641.25	
Rushcliffe	13/02329/OUT	£42,526.64	Construction of a raised pedestrian crossing between Rushcliffe Avenue and New Road
Rushcliffe	10/01962/OUT	£156,907.56	Local bus service provision following an alternative routing via Chapel Lane, operating seven days a week, using high specification low carbon buses.

Rushcliffe	Melton Road	£100,000.00	New bus stop infrastructure to serve the development
Rushcliffe	Edwalton SUE	£750,000.00	Local Bus Service Provision in the form of additional vehicle capacity on 'the Keyworth' to serve the site
Rushcliffe	18/02412/FUL	£93,152.00	Towards an augmentation of services 853 and/or 863 or Demand Responsive Transport (DRT) to serve the sites
Rushcliffe	18/02515/FUL	£56,280.00	
Rushcliffe	18/02524/OUT	£104,256.00	
Rushcliffe	18/02524/OUT	£27,801.60	Providing occupants of the development with a 2-month smartcard bus pass or equivalent
Rushcliffe	19/00535/OUT	£44,560.00	Providing occupants of the development bus taster tickets: Robin Hood Card 3-month season pass; Robin Hood Card 50-day flexi day pass or £250 Mango credit.
COMMUNITY			
Newark	14/01469/OUTM	£2,020.65	Increasing book stock at Farnsfield Library
Rushcliffe	13/02228/OUT	£6,035.35	Increasing book stock at East Leake Library
Rushcliffe	14/02313/FUL	£3,785.82	
Rushcliffe	17/00673/FUL	£8,172.68	Increasing book stock at West Bridgford Library
Rushcliffe	10/00559/OUT	£60,000.00	Equipment Storage Container; Waterless Toilet; Volunteer Welfare Unit at Cotgrave Country Park

Table 7: Contributions requested from the District / Borough Councils during the reported year

- 2.14 It should be noted that all contributions received by a local authority have specific criteria described in the Section 106 Agreement that determines how the funding must be spent. Often contributions will not be committed to a project until sufficient funding has been accrued to deliver that project, which may involve pooling contributions from more than one development. Similarly, payments may be triggered during an early phase of a development and will remain uncommitted until the need for the infrastructure later materialises. Uncommitted funds are continually reviewed by council services.

Appendix 1: List of contributions agreed during 2023/24

District	Application	Location	Purpose	Amount
Bassetlaw	21/01835/FUL	Land At Aveling Way Shireoaks Workshop	highways	£35,507.61
Broxtowe	20/00826/FUL	Land At End of Braemar Avenue, Eastwood	community-facilities	£8,457.00
			education	£183,778.00
			education	£997,652.00
			education	£90,322.00
			transport-and-travel	£180,000.00
			transport-and-travel	£3,950.00
	22/00100/FUL	Land off Kelham Way, Eastwood	transport-and-travel	£9,425.00
	22/00125/FUL	Station Road (Central) Car Park Station Road Beeston	highways	TBC
	22/00355/REG3	Inham Nook Hotel Inham Road Chilwell	education	£48,502.00
			transport-and-travel	£2,600.00
22/00767/FUL	Land South Of 50 Pinfold Road Newthorpe	education	£18,950.00	
		transport-and-travel	£10,100.00	
Gedling	22/0200	Harworth Land West of Lambley Lane, Gedling	education	£24,251.00
			education	£97,004.00
			transport-and-travel	£12,050.00
Mansfield	20/0169/OUT	Land at Pleasley Hill Farm, Water Lane, Pleasley	community-facilities	£25,457.50
			education	£1,831,750.00
			highways	£12,441.00
			highways	£16,691.00
			highways	£11,695.00
			highways	£11,748.00
			highways	£40,000.00
			highways	£11,606.00
			highways	£17,391.00
			highways	£64,000.00
			highways	£1,882,315.00
			other-waste-man	£51,926.50
			transport-and-travel	£30,000.00
			transport-and-travel	£600,000.00
	22/0479/FUL	Land North West of Broomhill Lane Mansfield	education	£78,765.00
			education	£341,302.00
			community-facilities	£2,957.00
			highways	£125,000.00
			highways	£125,832.00
			other-waste-man	£5,132.00
	23/0029/FUL	Mansfield Community Hospital, Stockwell Gate, Mansfield	transport-and-travel	£16,200.00
			transport-and-travel	£7,500.00
	23/0258/OUT	Forest Edge, 19 Oak Tree Lane, Mansfield NG18 3HN	education	£26,254.00
			education	£78,762.00
			highways	£28,462.00
			transport-and-travel	£13,500.00

	23/0522/FUL	Berry Hill Park, Lichfield Lane, Mansfield	transport-and-travel	£7,200.00
Newark	16/00506/OUTM	Land at Fernwood South	education	£7,491,738.66
			transport-and-travel	£525,000.00
			land	2.2ha
	22/00262/FULM	10 Victoria Street Newark on Trent	transport-and-travel	£12,700.00
Rushcliffe	21/01203/OUT	Land South of Hollygate Lane and North of Colston Gate, Cotgrave	education	£294,439.50
			highways	£48,642.61
			highways	£24,415.66
			other-waste-man	£6,131.70
			transport-and-travel	£66,759.00
			transport-and-travel	£26,533.00
			transport-and-travel	£33,379.00
	transport-and-travel	£7,500.00		
	22/01182/FUL	2 Bunny Lane Keyworth	transport-and-travel	£10,800.00

Appendix 2: List of Contributions received during 2023/24

District	Application	Location	Purpose	Amount
Ashfield	V/2019/0416	Land off Hamilton Way, Mansfield	transport-and-travel	£25,000.00
Bassetlaw	14/00503/OUT	Land west of Tiln Lane, Retford	education	£238,487.50
			highways	£80,577.00
	15/00493/OUT	Land at North Road, Retford (Trinity Fields)	transport-and-travel	£94,769.00
			transport-and-travel	£23,946.00
			community-facilities	£11,545.00
			education	£271,984.50
			highways	£44,225.00
	15/01457/FUL	Former Firbeck Colliery, Doncaster Road, Costhorpe	education	£164,473.00
			highways	£6,319.00
	15/01477/OUT	Land north of Thievesdale Lane & West of Blyth Road, Worksop	community-facilities	£4,990.81
			monitoring-fees	£2,982.07
			education	£231,373.79
			highways	£1,364.60
16/00015/FUL	Land at Thrumpton Lane Retford (Icon Polymer)	highways	£41,094.00	
18/00695/FUL	Land to the rear of Kenilworth Nurseries, London Rd, Retford	education	£185,771.00	
19/00433/FUL	Land off Beverley Road, Harworth	education	£192,998.00	
19/00765/OUT	Land North of Bracken Lane, Retford	education	£124,831.50	
22/00295/FUL	Plot A4, Lords Wood Road, Harworth	transport-and-travel	£22,843.00	
Broxtowe	17/00706/OUT	Former TBC Engineering Services, Bailey Grove Road, Eastwood	highways	£5,874.23
			education	£53,831.70
	19/00668/FUL	Beeston Maltings, Dovecote Lane, Beeston	education	£41,616.00
	19/00699/FUL	Frearson Farm Court, Chewton Street, Eastwood	transport-and-travel	£6,814.00
	20/00641/FUL	Land to the rear of Brinsley Recreation Ground, Church Lane, Brinsley	transport-and-travel	£14,103.75
transport-and-travel			£3,257.00	
Gedling	13/0546	Land Off Teal Close, Netherfield	transport-and-travel	£98,181.00
	13/1406	Land North of Papplewick Lane, Linby	education	£185,199.00
	15/1376	Land At Chase Farm (Former Gedling Colliery)	education	£2,127,969.00
	16/0306	Land At Glebe Farm, Glebe Drive, Burton Joyce	education	£47,225.06
			education	£47,438.06
	17/1263	Land adjacent Dark Lane	education	£132,058.00
			education	£92,553.06
	18/0607	Land North West Park Road Calverton Nottinghamshire	education	£421,401.00
	19/1186	Land at the end of Linden Grove, Gedling (Bonington Grange)	education	£291,838.50
			education	£268,993.50
20/0238	Ashdale Nottingham Road Burton Joyce Nottinghamshire NG14 5AQ	education	£26,903.00	
20/0258	Land north of Papplewick Lane, Linby	education	£38,701.00	
		education	£39,768.50	
20/1312	53 Woodthorpe Drive, Woodthorpe	transport-and-travel	£6,274.93	

	22/0240	Netherfield Methodist Church, Victoria Rd, Netherfield	transport-and-travel	£5,947.00
Mansfield	10/0805/ST	Land at Penniment Farm, Abbott Road, Mansfield (Phase 1)	highways	£2,788.82
	15/0181/ST	Land off Sherwood Oaks Close, Mansfield	education	£27,312.00
	15/0181/ST	Land off Sherwood Oaks Close, Mansfield	education	£20,593.00
	16/0329/ST	High Oakham House, 7 High Oakham Drive, Mansfield	education	£27,896.00
			education	£33,627.00
	17/0816/OUT	Stonebridge Lane Warsop	transport-and-travel	£22,007.65
			education	£321,842.50
			highways	£14,986.95
	18/0647/OUT	Phase 2 - Church Warsop Miners Welfare, Wood Lane, Church Warsop	transport-and-travel	£25,718.00
			education	£142,096.00
	20/0182/OUT	Land at Three Thorn Hollow Farm, Blidworth Lane, Mansfield	transport-and-travel	£6,857.28
			highways	£12,985.00
			education	£429,423.78
transport-and-travel			£5,620.72	
other-waste-man			£6,867.40	
20/0535/FUL	Sandhurst Quarry Sandhurst Avenue Mansfield	transport-and-travel	£11,657.00	
		education	£117,595.50	
21/0807/FUL	Longden Terrace, Warsop	transport-and-travel	£6,535.52	
22/0706/FUL	Carr Lane Playing Fields Warsop	transport-and-travel	£15,021.46	
Newark	14/00465/OUTM	Fernwood South - Land N & E Spring Lane/Hollowdyke Lane	highways	£6,037.00
	20/00873/FULM	Field reference Number 7109 Earning Road, Bilsthorpe	transport-and-travel	£10,339.88
	22/00262/FULM	10 Victoria Street Newark on Trent	transport-and-travel	£14,155.00
Rushcliffe	17/02292/OUT	Land off Lantern Lane, East Leake	transport-and-travel	£64,014.00
	18/02700/OUT	Land east of Nos 1 to 9 Springfield Close, Cropwell Bishop	education	£144,842.00
			education	£148,695.27
	18/02920/HYBRID	Land on Wilford Lane, West Bridgford	education	£67,093.71
			transport-and-travel	£11,629.00
			education	£353,201.00
	19/01287/FUL	Land North East Of Marl Close Wilford Road Ruddington	highways	£9,649.00
transport-and-travel			£30,421.00	
21/02283/FUL	Land North of Park Lane, Sutton Bonington (Lime Gardens)	transport-and-travel	£39,435.00	
		transport-and-travel	£39,435.00	
21/03104/FUL	Land west of The Becket Way, Wilford Lane, West Bridgford	highways	£55,000.00	