

Admissions policy – appendix

Tuxford Academy

Edition – September 2024 for academic year 2026/27

Contents

Introduction	3
Contact	3
Published admission number (PAN).....	3
Oversubscription criteria – year 7	3
Sixth form oversubscription criteria – year 12	4
Catchment area.....	4
Feeder schools.....	5

Introduction

This appendix should be read in conjunction with the Diverse Academies overarching admissions policy. It sets out the localised information for admission to Tuxford Academy the 'academy'.

Contact

For any additional information, or to book a trip around the academy, please contact the office for the attention of Philip Baker (Admissions Leader) at pbaker@tuxford-ac.org.uk or Julie Hethershaw (Transition Coordinator) at jhethershaw@tuxford-ac.org.uk or call 01777 870001

Published admission number (PAN)

The published admissions number for entry to the academy in year 7 is 248 students.

Sixth form: 460 (of which year 12 is 230). The external PAN for year 12 is 40. If fewer than 190 of the academy's own year 11 students transfer into year 12, additional external students can be admitted until year 12 meets its capacity of 230.

Oversubscription criteria – year 7

1	Looked after children and previously looked after children.
2	Children who live in the catchment area and attend a linked primary school on the closing date for applications and who, at the time of admission, will have a brother or sister attending the school.
3	Children who live in the catchment area on the closing date for applications and who, at the time of admission, will have a brother or sister attending the school.
4	Children of staff who have been employed at the academy for at least two years and/or are recruited to fill a demonstrable skill shortage.
5	Children who live in the catchment area and attend a linked primary school on the closing date for applications.
6	Children who live in the catchment area on the closing date for applications.
7	Children who live outside the catchment area and attend a linked primary school on the closing date for applications and who, at the time of admission, will have a brother or sister attending the school.
8	Children who live outside the catchment area and who, at the time of admission, will have a brother or sister attending the school.

9	Children who live outside the catchment area and attend a linked primary school on the closing date for applications.
10	Other children

Sixth form oversubscription criteria – external year 12

There are minimum entry requirements to gain entry into the sixth form for both internal and external students. Please see the academy website for minimum entry requirement information [Courses - Tuxford Academy \(tuxford-ac.org.uk\)](https://www.tuxford-ac.org.uk/Courses). Admission to the Post 16 Centre is subject to the course offered and which is assessed as the appropriate pathway for the individual student, in order that students can be confident that the courses offered are appropriate to their needs. Email enquiries to gcupit@tuxford-ac.org.uk or phone 01777 870001

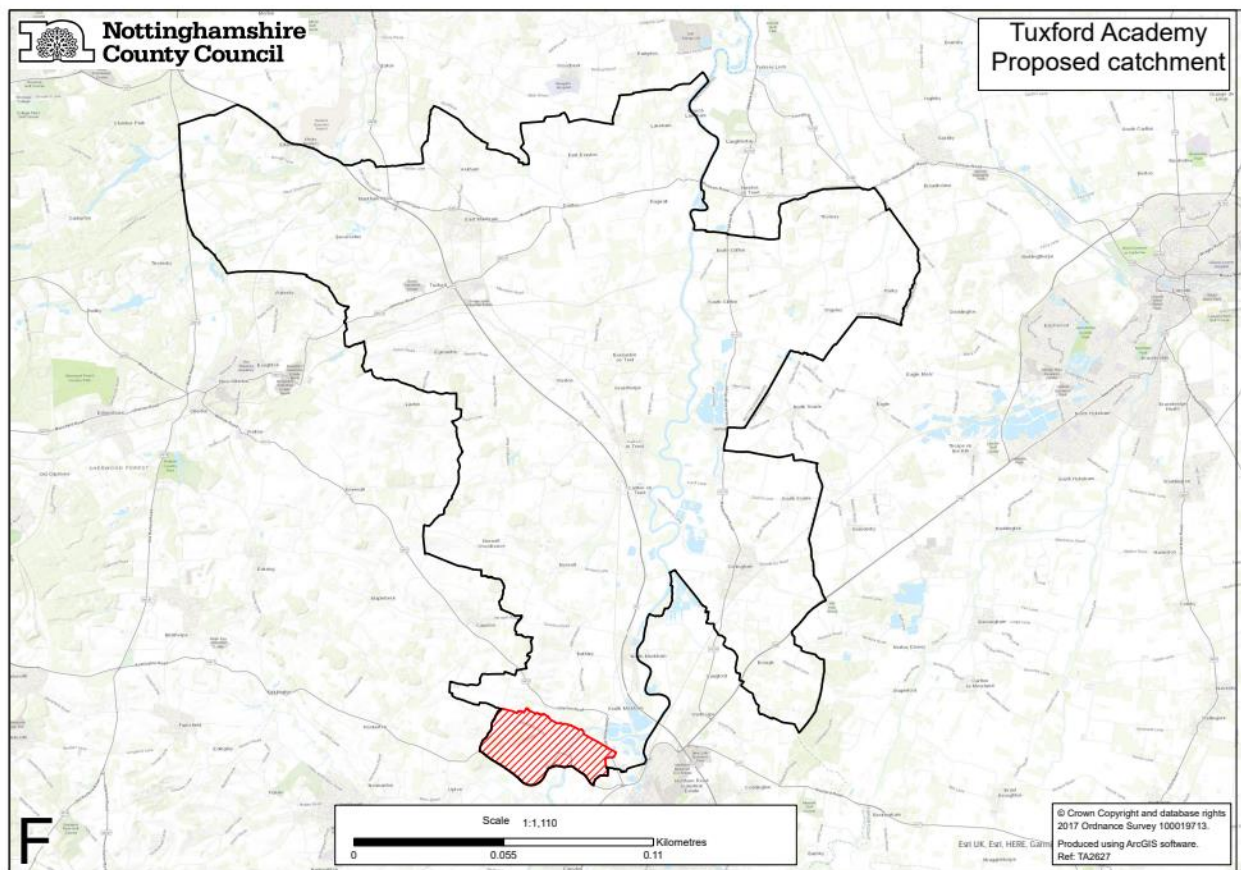
1	Looked after children and previously looked after children.
2	Children, who at the time of admission have a sibling attending the academy
3	Children of staff who have been employed at the academy for at least two years and/or are recruited to fill a demonstrable skill shortage.
4	Other children

Catchment area

The catchment area for the academy can be found at:

[School Details | Nottingham County Council \(nottinghamshire.gov.uk\)](https://www.nottinghamshire.gov.uk/SchoolDetails)

The catchment map below showing an additional area is included following a consultation process and determined in January 2025 for the 2026/27 academic year.



Feeder schools

Linked primary phase schools within the Tuxford Family of Schools:

- Dunham-on-Trent C of E Primary (Voluntary Controlled)
- East Markham County Primary
- Elkesley Primary and Nursery School
- Gamston St Peter's C of E Primary Academy
- John Blow Primary, Collingham
- Kneesall C of E Primary (Voluntary Controlled)
- Muskham Primary
- North Clifton Primary
- North Wheatley C of E Primary School (Voluntary Controlled)
- Norwell C of E Primary (Voluntary Controlled)
- Queen Eleanor Primary, Harby
- Rampton Primary
- St. Matthew's C of E Primary, Normanton-on-Trent (Voluntary Controlled)
- Sturton C of E Primary (Voluntary Aided)

Sutton-on-Trent Primary and Nursery School
Tuxford Primary Academy
Walesby C of E Primary School (Voluntary Controlled)